

IOM SRI LANKA

COUNTRY STRATEGY 2018 - 2020



International Organization for Migration (IOM)

The UN Migration Agency



Every effort has been made to ensure the information in this document is accurate.
Any omissions or corrections can be directed to our head office in Colombo.

IOM SRI LANKA

COUNTRY STRATEGY 2018 - 2020

ACKNOWLEDGEMENTS

IOM expresses its appreciation to the Government of Sri Lanka (GoSL) for its continuous and fruitful partnership and cooperation since the establishment of the IOM Mission in Sri Lanka in 2002.

IOM extends its gratitude to the Donors whose support has been, and will continue to be, instrumental in allocating the resources required to implement activities in the framework of this Strategy.

Finally, IOM thanks all of its other partners in Sri Lanka, including the United Nations, non-governmental organizations, community-based organizations, academia, research institutions and the private sector, with whom we look forward to working in the implementation of our initiatives.

TABLE OF CONTENTS

About our strategy	1
About us	1
Country strategy conceptual framework	2
AREAS OF COOPERATION	
1. Socio-Economic Resilience	3
1.1 Migrant return and reintegration assistance	3
1.2 Addressing migrant vulnerability	4
1.3 Empowering vulnerable youth	4
1.4 Refugee repatriation and reintegration assistance	5
2. Immigration and Border Management	6
2.1 Promoting integrated approaches to border management	6
2.2 Enhanced identity management and travel documents issuance systems	7
2.3 Combating people smuggling and other trans-border crimes	7
3. Facilitated Migration Services and Operations	9
3.1 Document verifications	9
3.2 Cultural orientation and counselling	10
3.3 Resettlement assistance	10
3.4 Humanitarian assistance for stranded migrants	10
4. Labour Migration	11
4.1 Promoting ethical recruitment	11
4.2 Enhanced pre-departure orientation	12
4.3 Support to inbound migration management	12
4.4 Regional labour migration initiatives	13
5. Migration Health	14
5.1 Migrant health assessments	14
5.2 Technical partnership	14
5.3 Evidence-based policy support	15
6. Social Cohesion and Reconciliation	16
6.1 Technical assistance on reparations	17
6.2 Strengthening independent commissions	17
6.3 Referral and support for marginalized groups	18
7. Disaster Risk Reduction and Climate Resilience	19
7.1 Disaster preparedness	19
7.2 Disaster response and recovery	20
7.3 Climate change adaptation	20
THE WAY FORWARD	22
Annex I : Strategic Framework	23
Annex II: Migration Infographics	25
Annex III: IOM Office Locations	26
Annex IV: IOM's Geographical Scope	27

ABOUT OUR STRATEGY

Building upon the achievements and lessons learnt during the last country strategy cycle (2014-2017), this document articulates IOM's strategic approach to addressing current and emerging migration realities in Sri Lanka through priority areas of cooperation to be pursued in its country programming.

At the country level, IOM's strategic priorities support Sri Lanka Vision 2025 – the country's main development framework, and as a member agency of the UN contribute to the United Nations Sustainable Development Framework (UNSDF) 2018-2022. Many of the activities outlined in this document build upon current programming and partnerships established under IOM's previous country strategy.

At the regional level, this country strategy aligns with the IOM Regional Strategy for Asia and the Pacific 2017-2020 and supports Sri Lanka's participation in several Regional Consultative Processes (i.e. the Bali Process, Colombo Process, and Abu Dhabi Dialogue).

At the global level, the document contributes to the progressive realization of migration-related Sustainable Development Goals (SDGs), embraces the guiding principles and commitments that are accompanying the drafting of the Global Compact on Migration to be adopted in late 2018, and is set within IOM's Migration Governance Framework (MiGOF). MiGOF is the only internationally agreed set of principles and objectives on migration governance and was approved by IOM Member States at the Council Resolution 1310 on 26 November 2015.

“ At the core of IOM's work are the needs of the Sri Lankan government, migrants, partners and Member States. In response to these needs, the country strategy provides IOM with a programmatic tool to frame its priorities for action and to guide its work in addressing emerging issues at the country, regional and global levels ”

Giuseppe Crocetti

Chief of Mission

IOM Sri Lanka and Maldives

To start the strategy development process, a Staff Strategic Retreat was held in October 2017 to take stock of challenges and achievements and discuss future directions of the Mission. The views and input gathered at the Strategic Retreat from over 100 staff from Head and Sub-Offices were reviewed and analyzed by the IOM Sri Lanka Senior Management Team, in coordination with the IOM Regional Office for Asia and Pacific, and outcomes are reflected in this final strategy document.

Periodic interactions with key government counterparts and partners as well as large scale national multi-stakeholder consultations on various migration domains were held between August and December 2017, which further contributed to refining IOM Sri Lanka's strategic position.

ABOUT US

Founded in 1951, the International Organization for Migration (IOM) provides services and advice to governments and migrants. With 169 Member States, IOM continues to expand its scope of activities to address the evolving migration challenges by providing a comprehensive set of responses to complex migration issues at the operational and policy level.

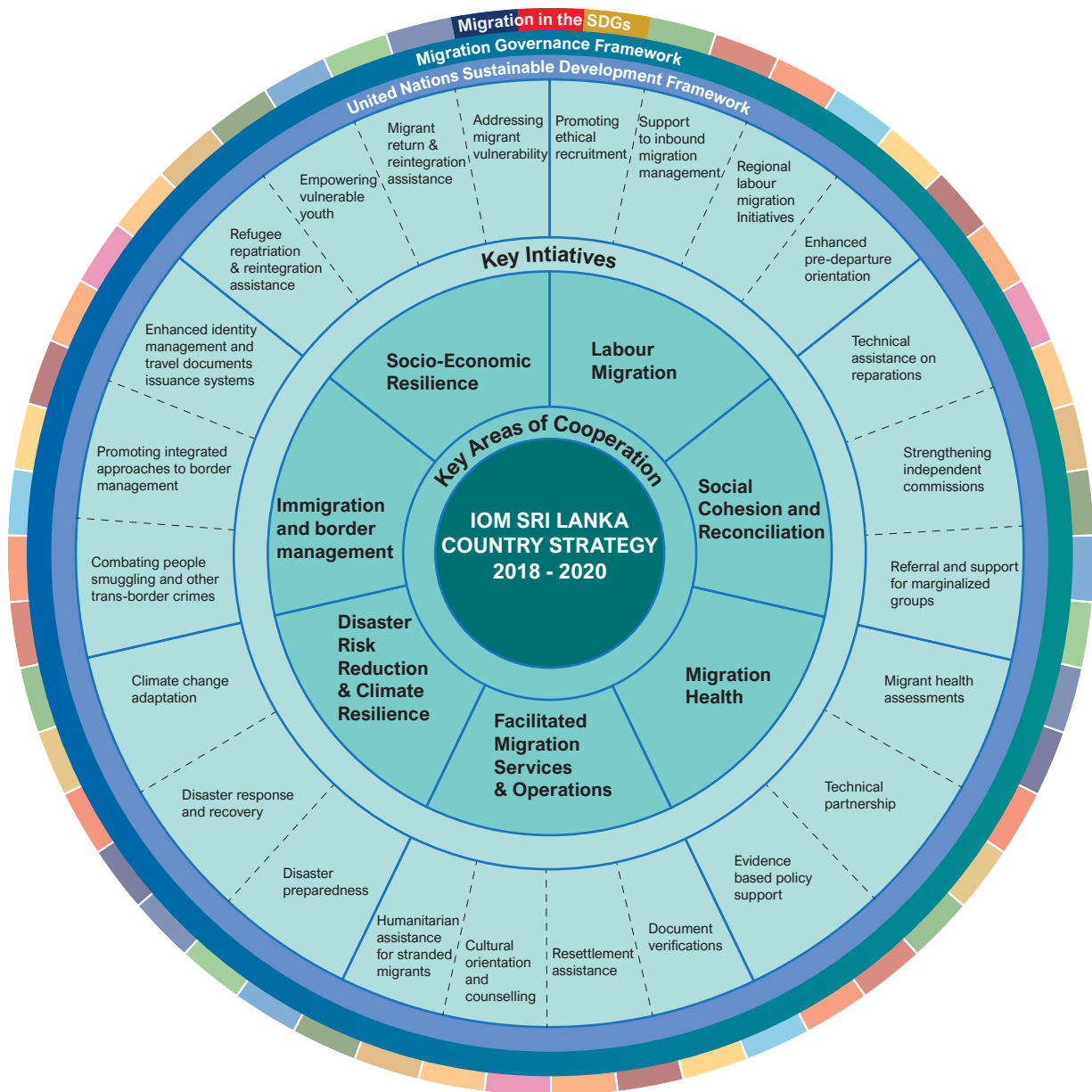
IOM is part of the UN System in Sri Lanka and formally became a United Nations related organization at the UN General Assembly in September 2016.

Sri Lanka became a Member State of IOM in 1990 and IOM established its presence in the country in 2002. The IOM Sri Lanka Mission currently counts over 100 staff distributed among its Head Office in Colombo, a Migrant Health Assessment Centre and an Operations and Migrant Services Centre (both also located in Colombo), three sub-offices located in Jaffna, Kilinochchi and Batticaloa, and two new sub-offices in the process of being opened in Mannar and Trincomalee.



IOM SRI LANKA'S COUNTRY STRATEGY CONCEPTUAL FRAMEWORK

In line with the objective of IOM Sri Lanka's country strategy to address current and emerging migration issues, the conceptual framework below illustrates how IOM's areas of cooperation and initiatives embrace the guiding principles and objectives of IOM's Migration Governance Framework¹, align with the four strategic drivers of the United Nations Sustainable Development Framework² and contribute to the progressive realization of migration-related Sustainable Development Goals.



Migration Governance Framework (MiGOF)

Principles and Objectives

- | | | |
|--|--|--|
| <p>1. Adherence to international standards and the fulfillment of migrant's rights.</p> <p>2. Formulates policy using evidence and "whole-of-government" approach.</p> <p>3. Engages with partners to address migration and related issues.</p> | | <p>1. Advance the socioeconomic well-being of migrants and society.</p> <p>2. Effectively address the mobility dimensions of crises.</p> <p>3. Ensure that migration takes place in a safe, orderly and dignified manner.</p> |
|--|--|--|

Migration in the SDGs

 <small>1.5 RESILIENCE TO CLIMATE EVENTS AND SOCIO-ECONOMIC SHOCKS</small>	 <small>3.8 ACCESS TO ESSENTIAL HEALTH CARE SERVICES</small>	 <small>4.1 SCHOLARSHIPS (STUDENT MOBILITY)</small>	 <small>5.2 TRAFFICKING (FOCUS ON WOMEN AND GIRLS)</small>	 <small>8.7 TRAFFICKING 8.8 MIGRANT WORKER RIGHTS (ESP. WOMEN MIGRANTS)</small>
 <small>10.7 WELL-MANAGED MIGRATION POLICIES 10.c REMITTANCES</small>	 <small>11.8 CITIES IMPLEMENTING INTEGRATED POLICIES</small>	 <small>13.1-3 RESILIENCE TO CLIMATE HAZARDS AND NATURAL DISASTERS</small>	 <small>16.2 TRAFFICKING</small>	 <small>17.16 GLOBAL PARTNERSHIP 17.17 PUBLIC, PRIVATE AND CS PARTNERSHIPS 17.18 DATA DISAGGREGATION (INCLUDING BY MIGRATORY STATUS)</small>

¹ For more information on MiGOF see: https://www.iom.int/sites/default/files/about-iom/migof_brochure_a4_en.pdf

² The for strategic drivers of the UNSDF are 1) Towards improved data, knowledge management and evidence-based policy; 2) Strengthened, innovative public institutions and engagement towards a lasting peace; 3) Human security and socio-economic resilience; and 4) Enhancing resilience to climate change and disasters and strengthening environmental management.



Paddy workers are able to work more efficiently after the construction of an agricultural road in Mullaitivu. © IOM 2015

10 REDUCED INEQUALITIES =	1 NO POVERTY 👤👤👤👤	1
MiGOF Objective 1, 2	UNSD Driver 3	

Socio-Economic Resilience

IOM recognizes that vulnerabilities of migrants can be reduced by determining how to effectively raise their levels of resilience to current and future stresses. To this end, the situation of all migrants participating in socio-economic resilience building activities is contextualized within their communities’ physical, social and economic wellbeing and resources and, at the same time, integrated with government services.

1.1 MIGRANT RETURN AND REINTEGRATION ASSISTANCE

IOM’s Assisted Voluntary Return and Reintegration (AVRR) programmes will continue to form a major component of this area of cooperation through the provision of assistance to vulnerable Sri Lankan individuals and families who choose, but have no independent means, to return home. Over the years, IOM has assisted thousands of Sri Lankans to voluntarily return to Sri Lanka from many destination or transit countries around the world and to reintegrate into their communities of origin. IOM emphasizes that voluntariness remains a precondition for all of its AVRR activities. Return and reintegration

programming continues to be responsive to and informed of social and economic contexts and real-time challenges for returnees drawing on IOM’s long-term presence and well established network of contacts.

Limited economic opportunities, compounded by low skills to engage in income generation and livelihood activities within the communities of origin, represent important push factors toward irregular migration and can also present a barrier to the sustainable reintegration³ of those who choose to return home. Hence, IOM will complement individual reintegration assistance with small scale community productive

³ Reintegration can be considered sustainable when returnees have reached levels of economic self-sufficiency, social stability within their communities, and psychosocial well-being that allow them to cope with (re)migration drivers. Source: Towards an integrated approach to sustainable reintegration in the context of return, IOM, 2017.

infrastructure development linked to market driven job based skill trainings and job referrals or employment and income generating activities for community members, including youth. To provide each returnee the chance of a better future within their own communities, the AVRR community development component aims to develop both the physical infrastructure and human resource base through: a) institutional capacity building to committee members of Community Based Organizations (CBOs); b) technical support for CBOs; and c) links with private sector for collective marketing. Furthermore, IOM plans to provide improved access to psychosocial support services for returnees.

Returnees can only be truly reintegrated within their own communities if their future is supported by local-level decision making and empowerment through equal access to socio-economic opportunities and support networks. Therefore, IOM's community-centered approaches aim to address the needs of both the returnees and their receiving communities and are sensitive to gender and the particular needs of children and other highly vulnerable groups, as well as considering the economic and social challenges that may be faced by returnees.

1.2 ADDRESSING MIGRANT VULNERABILITY

With the assistance of local institutions and community liaison officers in target villages where there is a high prevalence of irregular migration, IOM's safe migration information campaigns will continue to enhance public access to accurate information on the risks of irregular migration and the available options for legal and safe migration enabling potential migrants to make an informed decision about their choice to migrate. IOM's campaigns will be accompanied by an expanded IOM hotline service offering advice on safe migration to potential migrants. The hotline will also be used to generate statistics to help analyse migration patterns and perceptions and will assist IOM to identify and select beneficiaries for its campaigns and programming. IOM makes also use of its Community Response Map which is an online platform developed by IOM to facilitate direct feedback from beneficiaries, increasing IOM's transparency and accountability to the population it serves and enhancing IOM's operational efficiency in the field.

IOM adopts a dialogic approach to its safe migration outreach work by providing migrants and their communities with an opportunity to communicate directly about their situation and identify emerging concerns. This approach empowers them and serves as an important tool for exploring effective behaviour change and communication with the goal of better understanding potential migrants' perceptions on migration, their push factors and how to best disseminate accurate information to deter attempts or re-attempts at irregular migration. Considerations of each migrant's age, gender, livelihoods and education are included in IOM outreach strategies with data disaggregated to reflect these findings.

Activities to support the government's efforts in the prevention of and response to human trafficking will remain a priority area for IOM Sri Lanka through the provision of technical support to the National Anti-Human Trafficking Task Force which comprises eighteen government agencies and is coordinated by the Ministry of Justice. IOM supported the Task Force in the development and implementation of a nationwide anti-trafficking campaign through traditional and social media as well as through awareness-raising sessions held at the grassroots level for CBOs and local level government authorities and training for law enforcement officials on identification, referral and assistance for victims of trafficking. Moving forward, IOM will support: a) the development of dedicated online training modules for government officials at overseas diplomatic missions; b) the drafting of guidelines for effective government reporting on human trafficking cases; and c) the expansion of outreach and grassroots awareness work to other regions of the country known to be vulnerable to the occurrence of trafficking in persons.

1.3 EMPOWERING VULNERABLE YOUTH

Youth remains a high-risk group in post-conflict Sri Lanka, having grown up between ethnic and religious polarizations and facing issues of high unemployment rates, limited social inclusion and a lack of social mobility. A disproportionate number of youth from disadvantaged regions are resorting to irregular migration as a livelihood option. IOM's past and ongoing safe migration campaigns reveal that a lack of livelihoods and

income generating opportunities, together with low levels of vocational or technical skills and limited job market information lead to strong interest in migration opportunities, often through irregular channels.

Against this backdrop, and based on recommendations from project evaluations, IOM will continue to assist the most vulnerable and marginalized youth through direct assistance, referrals to private sector partners, and the enhancement of government service delivery capacity in support of youth. To this end, IOM will support youth career guidance initiatives and facilitate their participation in job-based skills development followed by on-the-job training and job placement opportunities available with the local business community and the private sector. IOM will also continue to enable trained youth to start group-based income generation activities under the supervision of government line departments and/or CBOs. Additionally, business development trainings will be provided to improve the overall capacity of youth to leverage resources effectively.

1.4 REFUGEE REPATRIATION AND REINTEGRATION ASSISTANCE

The protracted conflict in Sri Lanka, which came to an end in 2009, brought about the displacement of families and communities including the formation of a large Sri Lankan refugee population in the Indian State of Tamil Nadu. In 2016, the government approved a National Policy on Durable Solutions for Conflict-Affected Displacement which aims to ensure that all those who have endured displacement will be restored to a life of normalcy, safety and dignity. The policy made conditions more conducive for the voluntary, informed, dignified, and sustainable return and reintegration of Sri Lankan refugees from Tamil Nadu.

To this end, in partnership with the UNHCR and other partners, IOM will contribute to ongoing and future initiatives of the Ministry of Resettlement and other relevant ministries through: a) enhanced preparedness for return and repatriation through outreach, profiling, registration and other pre-departure support services in Tamil Nadu; b) orderly, safe and dignified repatriation assistance; and c)

sustainable reintegration through combined individual and community based support services at the arrival and post-arrival stages. Social cohesion activities will be an integral feature of this work in line with IOM's approach to social cohesion and reconciliation⁴.

“The strategy development process is a true example of IOM leadership and gave my team the opportunity to collectively reflect on our work and constructively plan for the future of the Migrant Assistance Unit including developing synergies with many other IOM and government programmes as we work in partnership to advance the well-being of migrants and society”

Priyantha Kulatunge

Head of the Migrant Assistance Unit

⁴ <http://srilanka.iom.int/iom/sites/default/files/IOM%20Sri%20Lanka%20brochure%20SCR%20Strategy.pdf>



Officials of the Sri Lankan Department of Immigration and Emigration inspecting passenger processing facilities at Singapore Changi Airport. © IOM 2017



Immigration and Border Management

IOM's Immigration and Border Management programme will continue to assist the government in achieving the twin objectives of maintaining national security and fostering economic development, at a time when the country is experiencing an increased cross border movement of people and goods as a result of rapidly rising trade and tourism, a revitalized economy, and increased economic and cultural ties with other countries. IOM will provide support to the newly established National Border Management Committee (NBMC) and its Member Agencies in the core areas of integrated border management, improvements to border management information systems and travel document issuance systems, identity management, data management, migration intelligence and risk analysis, and training and capacity building for border and migration officials.

2.1 PROMOTING INTEGRATED APPROACHES TO BORDER MANAGEMENT

Integrated border management involves enhanced coordination and cooperation between border agencies at any or all of the following levels: 1) within a single border agency where various sections hold specific functions; 2) between multiple agencies each holding a border management role; and 3) through international partnerships with border agencies

in other States⁵. With the rising numbers of goods and people crossing borders in a globalized era, Sri Lanka is in line with many countries around the world that are adopting an integrated border management approach seeking greater efficiency in service delivery.

In line with the country's Integrated Border Management Strategy 2018-2021, which sets out directions for enhancing border management

⁵ IOM and Integrated Border Management, International Organization for Migration, 2015

within a multi-agency integrated environment, IOM will work with all relevant agencies in the operationalization of the strategy, based on various pathways for integration, including: a) formation of a new Border Operations Committee to oversee the operational level of border management and report to the Cabinet appointed NBMC; b) establishment of a multi-agency Border Risk Assessment Centre to assess risks to the border and provide coordinated incident response; c) a shared IT system between border agencies that allows greater data accessibility and risk detection; d) a procedural framework that aligns border processes and procedures to ensure operational consistency and best practices; e) coordinated border training, communications, change management, and monitoring and reporting; and f) partial integration of administrative functions, such as funding, and alignment of policies, processes and procedures.

2.2 ENHANCED IDENTITY MANAGEMENT AND TRAVEL DOCUMENTS ISSUANCE SYSTEMS

Effective identity management and efficient access to credible identity information in a timely manner is crucial for sound decision making in migration management. In the last three years, the integrity of the Sri Lankan passport has been substantially improved as the result of IOM's support to the Department of Immigration and Emigration (DIE) in the introduction of biometric features and photographs compliant with the International Civil Aviation Organization's standards in the passport application lodgement and assessment process, thereby strengthening Sri Lanka's capacity to detect fraudulent claims of identity and enhance the integrity of the overall process. IOM will continue to support the enhancement of the Sri Lanka's identity management by improving relevant legislation, procedures, policies, systems and identity documents.

IOM will also support the DIE to utilize secondary document examination technologies and with related technical training for prompt impostor recognition at the Colombo Bandaranaike International Airport.

IOM will continue to support the Sri Lanka DIE in managing an Integrated Enquiry Management System (IEMS) which was first established with

IOM's technical assistance a decade ago. The IEMS facilitates the verification of migration operational data related to border controls, and passport issuance information between the DIE and multiple national and foreign agencies for better decision making. Through a multi-phased approach, IOM has contributed to optimizing the potential of IEMS by making it an online platform and by creating links with multiple databases, namely the Interpol Stolen and Lost Travel Documents database and the National Identity Cards issuance system, to gather, share and cross-check information.

The Readmission Case Management System (RCMS) was established at the DIE through technical support from IOM with the objective of facilitating the smooth readmission of persons to Sri Lanka in the context of the existing Readmission Agreement between the EU and Sri Lanka. The online RCMS in Sri Lanka enables the issuance of temporary travel documents, containing security features, to undocumented persons whose return to Sri Lanka is requested by host country authorities. It also assists Sri Lankan authorities involved in readmission, such as Sri Lanka Diplomatic Missions, immigration and police at the airport, and other law enforcement agencies in processing readmission applications and clearance at the port of entry. Established by IOM in 2012, the RCMS will be assessed and improved to better meet emerging needs and requirements along with IOM's policy and operational support extended to the National Coordinating Committee on Readmission within the Ministry of Foreign Affairs.

2.3 COMBATING PEOPLE SMUGGLING AND OTHER TRANS-BORDER CRIMES

Borders are the first line of defence of a country and carry various political and social functions, the most important of which are sovereignty, protection and the formation of legal, economic, and social identities. In a globalized economy, borders can appear to lose some of their functions, but the security implications of migration, including trans-border crime such as people smuggling, human trafficking and international terrorism, are yet to be fully addressed. IOM's border vulnerability assessment, recently conducted at the Bandaranaike International Airport, and the resulting report submitted to the government,

showed that Sri Lanka is no exception to these trends. Securing the country's borders is a key policy priority for the Government of Sri Lanka to ensure that it has the capacity to identify high risk travellers before their arrival. IOM will contribute to this achievement through providing support to improved intelligence gathering, data analysis, travel history analysis, and risk profiling activities, in cooperation with international enforcement agencies such as Interpol and foreign immigration services.

Strengthened legislative frameworks are key enablers for immigration and law enforcement authorities to effectively combat human smuggling. Building upon IOM's support in the review of primary and secondary national migration legislation, and the production of a resulting gap analysis report, IOM will continue to extend its technical assistance to the government to inform the redrafting of the Immigrants and Emigrants Act, with a view to strengthening the existing legislative framework and to empower Sri Lanka immigration and law enforcement authorities to take action against transnational organized crime, with a particular focus on migrant smuggling.

As in other countries, the absence or lack of coordinated migration intelligence hinders opportunities for disrupting people smuggling, human trafficking and other cross border crimes, thus impeding changes in policies and legislation. A system design report was produced by IOM to facilitate evidence-based decision making by the DIE and the Ministry of Law and Order through the establishment of a migration functional analysis unit to more effectively combat national and transnational border security threats. IOM will continue to support the effective application of procedures and processes recommended by the system design report to support national immigration and law enforcement authorities to gather migration intelligence and improve coordination capacity among relevant agencies, particularly in the context of the new Sri Lanka Integrated Border Management Strategy.

Furthermore, IOM will provide technical assistance to the Consular Division of the Ministry of Foreign Affairs for the introduction, on a pilot basis, of a remote document legalization system as a means to promote the

prevention of document forgery, which is a widespread and systematic matter of concern for local authorities.

“ Recognizing that this is an era of unprecedented mobility and that the need to support coherent, comprehensive and balanced approaches to migration is becoming increasingly relevant, IBM programme in our country strategy is designed to support Sri Lanka in effectively managing immigration and border control by balancing people movement and country security ”

Shantha Kulasekara

Head of the Migration Governance Unit



A refugee accepted for resettlement in Canada attends a pre-departure orientation training. © IOM 2015

10 REDUCED INEQUALITIES 	4 QUALITY EDUCATION 	3
MiGOF Objective 1, 2, 3	UNSDG Driver 3	

Facilitated Migration Services and Operations

Through its Facilitated Migration Services (FMS) portfolio IOM is uniquely positioned to support states to improve migration governance through the provision of efficient and cost-effective international migration services. In support of visa application processing, IOM provides tailored operational assistance to Member States' immigration and consular departments, which are designed to enhance data collection, streamline processes, eliminate time-consuming administrative functions, reduce costs, improve service standards and combat fraud.

Such services equally benefit both temporary and permanent resident visa applicants by providing timely and accurate visa related information via multiple channels in a safe and empowering environment, providing a transparent and cost-effective alternative to often unscrupulous visa brokers. IOM's provision of facilitated migration services includes visa application information, health assessments, visa form-filling assistance, visa application data capture and transfer, visa application completeness checks, visa appointment scheduling, interview facilitation, verification services, travel document examination, skills and language testing, visa fee processing, identity checking and biometrics enrolment, DNA collection, visa application tracking, visa documentation logistics and return, logistical assistance to visa offices, pre-departure orientation and travel assistance.

3.1 DOCUMENT VERIFICATIONS

Through its Operations and Migrant Services Centre in Colombo, IOM will continue to deliver objective, factual, accurate and efficient verification

services. IOM leverages local knowledge and networks, and is able to operate where poor telecommunications may make remote verifications unfeasible or where verification

related travel may be too costly, time-consuming or pose a security risk for the requesting Member State's Visa Office. The verification levels differ, depending on immigration risk factors and the nature of the service request. Various verification approaches and techniques are used including: remote checks conducted via telephone; paper based checks conducted via official correspondence with issuing authorities by mail and telephone; and site visits to directly consult with issuing authorities. IOM conducts verification on identity and civil status documents, business and investment documents, legal documents as well as employment and education-related documents.

Extending or expanding IOM facilitated migration services in the upcoming strategy period, wherever appropriate and relevant, constitutes a key priority for IOM as an important means for contributing to the prevention and controlling of high irregular migration incidences from Sri Lanka.

3.2 CULTURAL ORIENTATION AND COUNSELLING

Cultural orientation prepares refugees and migrants by providing practical information on countries of destination, and assists refugees in setting realistic goals, developing the skills and attitudes needed to succeed in their new environment. IOM works closely with governments to identify the key priority messages and values that are critical for refugees' successful resettlement. Pre-departure orientation is designed to assist refugees and migrants to develop realistic expectations and to become self-sufficient more quickly. Courses by IOM's multilingual multi-ethnic trainers help refugees anticipate integration challenges and facilitate their transition into the receiving society. IOM also offers independent and confidential immigration advice, visa application assistance and travel services to individuals, their sponsors, and businesses. In certain countries of destination, IOM has in place a network of registered migration agents who link with IOM Offices in countries of origin such as Sri Lanka to extend services and assistance to migrants, their spouses, and partners.

3.3 RESETTLEMENT ASSISTANCE

Refugees, who are nationals from countries other than Sri Lanka, and selected immigrants

from Sri Lanka will continue to receive assistance from IOM's Resettlement Services. Some of these services are delivered in Sri Lanka on behalf of the IOM's Resettlement Support Centre for South Asia based in Kathmandu, Nepal. IOM works closely with governments, the United Nations High Commissioner for Refugees (UNHCR) and other partners. UNHCR identifies, interviews and submits refugee cases to countries for resettlement consideration. Subsequently, under cooperative agreements with those same countries, IOM resettlement services take place through case processing, health assessments, pre-departure orientation and international travel assistance in preparation for refugees' resettlement to third countries. Upon arrival, resettlement countries provide refugees with legal and physical protection, including access to civil, political, economic, social and cultural rights similar to those enjoyed by nationals. Most refugees eventually become naturalized citizens of their country of resettlement. By 2017, IOM Sri Lanka had assisted over 2,000 recognized refugees from 19 different countries with the United States and Canada featuring as the two top resettlement countries. IOM will also continue its family reunification programme which assists family members in Sri Lanka to join their relatives in their country of resettlement.

3.4 HUMANITARIAN ASSISTANCE FOR STRANDED MIGRANTS

IOM further assists, through travel and operational support services, the Government of Sri Lanka in the provision of return assistance to foreign nationals who are stranded in Sri Lanka as well as with the return of Sri Lankan nationals stranded overseas during conflict, distress, or other emergency situations.

“The unit I am privileged to head conducts refugee and immigrant resettlement through comprehensive resettlement services as a part of its global contribution to migration management. The unit further contributes to orderly, safe and dignified migration through provision of efficient and cost effective international migration services”

Chameera De Silva

Head of the Operations and Migrant Services Unit

කොළඹ ක්‍රියාදාමය Colombo Process Inaugural Ceremony 5th Ministerial Consultation

25th August 2016
Colombo, Sri Lanka



Hosted by the Ministry of Foreign Employment
With Technical and Financial Assistance from the International Organization for Migration



Hon. Mangala Samaraweera, Former Minister of Foreign Affairs, speaking at the inaugural ceremony of the 5th Ministerial Meeting of the Colombo Process. © IOM 2016



4

Labour Migration

Recognizing the tremendous benefits that Sri Lankan migrant workers bring to the national economy and society and the risks they face through their foreign employment, IOM will continue to support the Ministry of Foreign Employment in the implementation of its long term vision and commitment to labour migration as enshrined in the 2008 National Labour Migration Policy. The Policy is currently under review and aims to address migrants' rights, protection and welfare. Along with a large outgoing workforce, Sri Lanka is gradually evolving into a country of destination for several thousand migrant workers from neighboring countries as a result of labour shortages in certain job sectors. Hence, there is a need for IOM's policy and operational support to the government in planning and implementing effective inbound labour migration processes and frameworks for the first time in the country.

4.1 PROMOTING ETHICAL RECRUITMENT

In the regulation and implementation of the recruitment process in Sri Lanka, there still remain shortcomings and loopholes that challenge the National Labour Migration Policy and its goal towards the fulfillment and protection of all human and labour rights of migrant workers. The regulation of the industry is important to ensure the prevention of exploitation and abuse of migrant workers in Sri

Lanka and in key countries of destination. The Policy's section on governance of the migration process calls for the government to regulate the recruitment industry through administrative policies and procedures, licensing schemes, codes of conduct, monitoring and penal provisions to address offences. The government has made efforts to ensure the effective implementation of the Policy and subsequently has developed a Code of Ethical Conduct (CoEC) with the

intention of streamlining the practices and enhancing the professionalism of the recruitment industry.

IOM will contribute to the fostering of ethical and fair recruitment practices and processes within the recruitment industry at national and district levels in a rights based and migrant-friendly manner by: a) conducting a study on recruitment practices of recruitment intermediaries in the Sri Lankan foreign employment industry; b) developing standard operating procedures and delivering training of trainers around the CoEC, and; c) strengthening Sri Lankan diplomatic missions labour attachés' capacity in countries of destination by assisting with formalizing a validation process for foreign recruitment agencies.

Furthermore, IOM will seek to build synergies with its own other existing projects and initiatives, including the IOM's International Recruitment Integrity System (IRIS)⁶ and will explore new and innovative approaches to continue promoting ethical and fair recruitment practices and processes in a migrant-friendly manner.

4.2 ENHANCED PRE-DEPARTURE ORIENTATION

Migrant workers often experience substantial barriers to integration in the destination country's work force and larger society. Many migrants are not well informed regarding their rights and responsibilities under local labour laws in countries of destination, thereby increasing their vulnerability to exploitation, abuse, and breaches of labour contractual rights. In addition, migrants' lack of awareness of cultural norms and practices in countries of destination can lead to social friction, miscommunication, and conflict with employers and local community members. Such challenges may result in adverse impacts on individual employers and workers, as well as economies and societies as a whole, not only in countries where they are employed but also in origin countries, by breeding mistrust between countries and their nationals.

A Comprehensive Information and Orientation Programme (CIOP) for migrant workers was adopted in 2014 by the member states of the Abu Dhabi Dialogue (ADD)⁷ as a regional

initiative initially led by the government of the Philippines. Following IOM's engagement in the Pre-Departure Orientation (PDO) component of CIOP, including a mapping of national PDO Programmes in countries of origin of the ADD and the development of a regional guide for PDO and PDO Management System (PMS), the ADD Permanent Secretariat invited ADD member states to identify interested pairings for the phase II of CIOP; Sri Lanka was paired with the UAE. Alongside Pre-Departure and Post-Arrival Orientation, Pre-Employment Orientation will be rolled out in the CIOP's Phase II. IOM will assist with the implementation of this initiative in Sri Lanka by targeting those who are contemplating work overseas but have not yet made this decision, in order to help prospective migrants assess whether overseas employment is a suitable choice, thereby positively influencing their decision-making process.

4.3 SUPPORT TO INBOUND MIGRATION MANAGEMENT

Sri Lanka has seen a significant increase in foreign investment and tourist arrivals since the end of the conflict. With mega investment projects such as the Colombo Port City, Hambantota Port and the signing of several Free Trade Agreements (FTAs) with neighbouring countries, the arrival numbers of foreign nationals and migrant workers on both resident and work visas will rapidly increase. Amongst other measures, the government is taking steps to introduce a new employment visa regime in line with these developments and in accordance with the proposed FTAs with China, India and Singapore.

To address the labour gap in the construction industry and in other sectors, the government plans to recruit migrant workers from Asian countries to meet this immediate need while remaining cognizant of the need to ensure migrant rights are protected in the process.

With the objective of supporting the government's efforts to establish a well-managed inbound migration system, in collaboration with the DIE and other relevant government ministries, IOM will seek means and avenues to offer its advice and services to the government for the development and implementation of a robust Inbound Migrant Management Solution (IMMS) in coordination

⁶ IRIS is a social compliance scheme that is designed to promote ethical international recruitment. It is comprised of an international standard, a voluntary certification scheme for labour recruiters and a compliance and monitoring mechanism. For businesses and migrant workers, IRIS serves as a due diligence tool for the assessment of labour recruiters. Source: <https://iris.iom.int/>

⁷ Ministerial Consultations on Overseas Employment and Contractual Labour for Countries of Origin and Destination in Asia, known as Abu Dhabi Dialogue (ADD)

and consultation with all concerned government and non-government actors.

4.4 REGIONAL LABOUR MIGRATION INITIATIVES

Aware of the importance to enhance dialogue and cooperation amongst countries of origin and countries of destination for labour migration, bilaterally, regionally and internationally, and building upon IOM's extended support to the Sri Lankan Chair of the Colombo Process (CP), vested with the leadership of the Minister of Foreign Employment between 2013 and 2017, IOM in Sri Lanka will continue to provide technical assistance, through its regional labour migration programme, to the CP thematic priorities under the leadership of the current Chair in Nepal and in coordination with the CP Secretariat and relevant units and departments within IOM.

The CP is a Regional Consultative Process on the management of overseas employment and contractual labour for countries of origin in Asia. It is a member state-driven, non-binding and informal forum that facilitates dialogue and cooperation on issues of common interest and concern relating to labour mobility. The CP was established in 2003 in response to calls from several Asian countries of origin which recognized the need for optimizing the benefits of organized labour migration whilst protecting migrants from exploitative practices in recruitment and employment.

The current membership of the Colombo Process consists of 12 Member States. Under the leadership of the chairing country, the Member States regularly meet for Senior Officials' Meetings and Ministerial Consultations to advance their commitments to the four principal objectives and thematic priorities. The Member States also implement programs both at the national and regional levels in partnership with IOM, UN agencies, development partners and countries of destination in pursuit of the thematic priorities.

In the frame of its regional labour migration programme, IOM in Sri Lanka currently operates a Colombo Process Technical Support Unit (CPTSU) based in Colombo through which a number of mutually reinforcing activities are implemented in line with the current thematic

priorities of the CP which include: a) Skills and Qualification Recognition Processes; b) Fostering Ethical Recruitment; c) Pre-departure Orientation and Empowerment; d) Remittances, and; e) Labour Market Analysis. IOM will continue to provide technical support to the CP through its CPTSU in the implementation of activities in support of current priorities and will explore means for continued support to the CP in new thematic areas or initiatives as required during the strategy cycle.

“ Technical support for Regional Consultative Processes (RCPs) on migration is a key area of IOM's policy related work which is becoming increasingly important given RCPs' roles in advancing SDGs and contributing to the development of the Global Compact for Migration. IOM strives to continue its support to the Colombo Process as one of the most vibrant RCPs ”

Masako Ueda

Head of the Regional Labour Migration Unit



Address by H.E. Maithripala Sirisena, President of Democratic Socialist Republic of Sri Lanka, at the 2nd Global Consultation on the Health of Migrants in Colombo. © IOM 2017



Migration Health

IOM’s migration health activities in Sri Lanka work towards the vision enshrined in the 2013 National Migration Health Policy, one of the first of its kind in the region. The Policy recognizes that when migrants and mobile populations have a good standard of physical, mental and social wellbeing, they are able to more substantially contribute towards the social and economic development of their home communities and their host societies.

5.1 MIGRANT HEALTH ASSESSMENTS

In line with the National Migration Health Policy, IOM will continue providing migration health assessments with technical assistance to the Ministry of Health (MOH) to the standards developed for implementing and monitoring pre-departure health assessments. Since mid-2014, IOM has offered migrants direct access to health assessments. These migrant-friendly assessments are conducted at IOM’s dedicated health assessment facility established in 2014 in Colombo. The centre adheres to international best practices and provides early detection and case management of pulmonary tuberculosis and other conditions.

One of the strategies under the key results area of the National Migration Health Policy calls for the establishment of health assessments for resident visa applicants to Sri Lanka. IOM will thus provide technical assistance to the MOH in developing and implementing an inbound health assessment programme to improve the health security of the country and enhance migrants’ access to national health and social services thereby contributing to maximize the developmental impact of migrants into Sri Lankan society.

5.2 TECHNICAL PARTNERSHIP

The risk of incidence of imported malaria cases in Sri Lanka is one of the major challenges to the

National Malaria Programme (NMP). The country was declared malaria-free in 2016 and is working to maintain that status. IOM's Health Unit will continue its partnership with the MOH and NMP which was initiated in 2012. Foreign visitors and Sri Lankan migrants returning from malaria endemic countries are being screened for malaria through a rapid diagnostic test upon arrival at the main international airport. Any traveller identified as positive for malaria is referred to the NMP for further investigation and treatment. This intervention has been commended by both national and international health authorities.

IOM will continue its support to Sri Lanka's national vertical health programmes to address migratory related health issues including to the National Anti-Malaria Campaign, National Programme on Tuberculosis and Chest Diseases, the Sexually Transmitted Diseases & HIV/AIDS Control Programme, and the National Mental Health Programme with the latter focusing on former conflict affected populations. Health promotion activities in line with the government's national policies will be implemented by IOM's Health Unit across various areas of cooperation.

5.3 EVIDENCE-BASED POLICY SUPPORT

IOM's migration health research work in Sri Lanka supports and informs migration policy and practice across a broad range of inter-related issues. IOM's policy-oriented and operational research, based on pragmatic and evidence-based analysis, has informed the implementation of multiple projects, and positively influenced national policy debates and stimulated new operational approaches and activities.

IOM's sound ethics-based and principled approaches to migration health research are welcomed by international communities of practice, and as such, IOM Sri Lanka responds to requests to disseminate research findings through international academic journals. IOM's research is relevant to national contexts, and also contributes to regional and international dialogues and practices.

IOM will build upon its extensive research practice in Sri Lanka⁸ by ensuring that research is included as an integral and inter-sectorial

feature of its own programmes including in the area of disaster risk reduction and climate resilience.

IOM has gained a wealth of knowledge and expertise during its first 15 years of operations in Sri Lanka. Research is just one important aspect of informing and building this knowledge. In line with IOM's global institutional initiative in support of a more comprehensive approach towards knowledge management, IOM will work in the upcoming strategy period to improve its capacity to analyse, develop, process and share knowledge assets generated by its projects and processes, with a view to continue to add value to its work and that of its partners and beneficiaries.

“ We empower migrants to preserve and improve their health and wellbeing through innovative research solutions and operational excellence for the good of Sri Lanka, region and the world ”

Dr. Mudassar Ben Abad

Head of the Migration Health Unit

⁸ *Migration health research to advance evidence based policy and practice in Sri Lanka, Volume 1, IOM, 2017*



Cover photo of IOM Sri Lanka's social cohesion and reconciliation strategy. © IOM 2015

16 PEACE, JUSTICE AND STRONG INSTITUTIONS	5 GENDER EQUALITY	6
MiGOF Principle 1 Objective 2	UNSDG Driver 2	

Social Cohesion and Reconciliation

IOM's approach to social cohesion and reconciliation in Sri Lanka advances the implementation of the Peacebuilding Priority Plan, which supports the efforts of the government's broader actions in promoting reconciliation, accountability and human rights in Sri Lanka. It also supports three major undertakings of the Government of Sri Lanka (GoSL): 1) Sri Lanka's implementation of the UN Human Rights Council Resolution which GoSL subscribed to in September 2015; 2) Sri Lanka's National Policy on Durable Solutions for Conflict-Affected Displacement approved by Cabinet in 2016; and 3) GoSL's overall National Policy on Reconciliation introduced in 2017. IOM's work on social cohesion and reconciliation aims to contribute to building a Sri Lankan society which works towards the well-being of all its members, fights exclusion and marginalisation, creates a sense of belonging, promotes trust, and offers its members the opportunity of upward social mobility.

The civil society's engagement is an integral feature of IOM's work in this space. There is currently a window of opportunity for traditional and newly emerging civil society actors, including the media, to contribute to peace processes by addressing ethnic divides and public opinion through education and awareness-raising programs, cross-ethnic dialogue, advocacy work, informal diplomacy, reconstruction and development. IOM will work alongside the civil society to increase participation in the reconciliation process through enhanced dialogue and capacity building. IOM's commitment and capacity to lead and support Social Cohesion and Reconciliation work was demonstrated through the organization of an international conference on reparations in Colombo. A week after the conference, the Cabinet approved the proposal to move ahead with the setting up of a national reparations framework.

6.1 TECHNICAL ASSISTANCE ON REPARATIONS

The signing and the co-sponsoring of the UN Human Rights Council (UNHRC) Resolution in September 2015⁹ presents a watershed moment in the Sri Lankan post-conflict history and shows the commitment by the Government of Sri Lanka (GoSL) to furthering the peace consolidation and reconciliation agenda in the country. By committing to the stipulations of the UNHRC Resolution and by initiating the process of national dialogue on reconciliation, the Government of Sri Lanka and civil society embarked on a complex and challenging mission which, if conducted thoroughly, inclusively and efficiently, will contribute to lasting peace. Following a national consultative process, which was conducted by the GoSL throughout 2016 and culminated with the submission of the final report of the Consultation Task Force on Reconciliation Mechanisms, the GoSL is now in the process of designing a reparations framework, amongst other important related undertakings.

Restorative justice mechanisms, such as reparations for human rights violations¹⁰, can deliver quick and efficient benefits to the most affected population, thereby empowering the victims to have more capacity to engage in other aspects of the process. Experience from other countries demonstrates that reparations through judicial processes (criminal or civil) are not necessarily feasible for countries with a large and diverse number of cases, for which comprehensive reparations, also known as administrative reparations, often represent the most viable and inclusive option available. Reparations programmes can be legally anchored in different frameworks: some may result from an international litigation process, others are reliant on the recommendations of Truth and Reconciliation Commissions or founded on dedicated legislation, peace agreements, or a combination of both. In the case of Sri Lanka, the soon-to-be established reparations system appears to be taking shape as administrative reparations based on dedicated legislation.

Building upon IOM's ongoing technical assistance to the Secretariat for Coordinating Reconciliation Mechanisms (SCRM) and other relevant line Ministries for the establishment of a

reparation mechanism, IOM will support the GoSL in the operationalization of the Reparations Office, once the reparations legislation is passed, by provision of technical advice in addressing a number of related issues which are relevant for the feasibility and efficiency of the reparations programme. Technical advice on the establishment of the Reparations Office will be complemented by related capacity building and training for members and officials of the Office, following due appointment/recruitment processes. IOM will further support the Office of Missing Persons (OMP) in developing a referral mechanism with the Office of Reparations as mandated by the OMP legislation to ensure there are clear standard operating procedures in place.

Symbolic reparations such as apologies, memorials, and commemorations can be just as beneficial, healing, and meaningful as material reparations, if implemented in a conflict-sensitive and context-specific manner. To complement IOM's work on supporting the establishment of an administrative reparations programme, IOM will work with its local partners and civil society organizations (CSOs) to conduct a mapping of existing events and spaces created for memorialization in the island as the basis for the Reparations Office to draw from and align with, in designing its symbolic reparations framework, to the extend this will be pursued by the GoSL.

Following IOM's support to SCRM for the convening of a technical workshop on land and property restitution targeting key government interlocutors, IOM will continue to facilitate, as requested by the GoSL, dialogue on key aspects of a possible land and property restitution program: a) Conceptual and practical links between land and property restitution/compensation, transitional justice and durable solutions for displaced populations; b) International standards and best practice; c) Legal framework and institutional models; d) Mechanisms and processes; e) Restitution models such as restitution, compensation, alternative land allocation, hybrid models, innovative solutions; and f) Resources, outreach, public relations and managing expectations.

6.2 STRENGTHENING INDEPENDENT COMMISSIONS

IOM's support to the National Police Commission (NPC) works towards the introduction of

⁹ UNHRC Resolution A/HRC/30/L.29 on "Promoting reconciliation, accountability and human rights in Sri Lanka"

¹⁰ The 2005 UN Resolution 60/147 upholds the right to reparations for persons who collectively suffered harm through acts or omissions that constitute gross violations of international human rights law, and affirms the obligation of states to provide reparations on the basis of international law.

information management systems to strengthen service delivery and boost public confidence in the NPC.

Recognizing the need to improve reporting and data analysis capacity at the National Police Commission and streamline the communication between the NPC, Sri Lanka Police and other relevant stakeholders, IOM will support the introduction of a Public Complaint Management System. Furthermore, IOM assistance will support two Divisions of the NPC: 1) the Establishment and Disciplinary Division responsible for disciplinary controls; and 2) the Policy, Legal and Appeals Division, responsible for policy formulation, implementation and coordination pertaining to issues relevant to public/police relations, dispute settlement between the State and the police personnel, and the liaison with international agencies through the Ministry of Foreign Affairs.

6.3 REFERRAL AND SUPPORT FOR MARGINALIZED GROUPS

IOM plans to assess the needs of former combatants and their families based on IOM's current database and additional information available with the Ministry of Resettlement to determine their eligibility for related support programs. Following the need assessment and selection of beneficiaries based on established vulnerability criteria, IOM will develop a three-pronged approach to reintegration by offering the following pathways and options: 1) market driven job based skills development through career guidance and trainings; 2) job placements and self-employment through referrals to private sector and business counselling, and; 3) livelihood assistance through cash or in-kind support.

Worst affected by the conflict, women are also heavily committed to seek avenues to prevent the recurrence of violence. With a view to enabling women to play a leading role in peace building and reconciliation processes, IOM will foster mutual understanding, trust and socio-economic ties through sustained dialogue on peace-building and economic exchange programs for women entrepreneurs by facilitating north-south business networking and the promotion of 'markets for peace' as a powerful symbol of inter-ethnic business bonds.

As reconciliation mechanisms are designed and instituted by the GoSL, systems are to be in

place for victims to access psychosocial support thereby enabling them not only to heal and recover from the trauma suffered but also to build their agency to participate in the transitional justice process. IOM is in the process of developing a Victim Case Management Protocol as a mechanism to facilitate seamless, victim-friendly and confidential referral and support mechanisms for all victims in need of psychosocial support in a timely manner. IOM will introduce non-clinical trauma awareness and psychosocial support and referral for conflict-associated groups through the mobilization of community-based structures and mechanisms with a view to contribute to community healing efforts as well as to the prevention of reoccurring conflict violence and extremism, thereby enhancing community resilience to ongoing and future stressors.

Many Sri Lankan youth who grew up over the past 30 years have been separated by geography, ethnicity, religion, language, politics and culture, with some exposed to ideologies that spread suspicion, fear and mistrust. Representing about a third of the total population of Sri Lanka, youth have the potential to play a crucial role in peace-building and reconciliation activities, particularly through activities that draw together youth from diverse communities in both urban and rural regions, fostering active inclusion in social, economic and political processes which work towards a secure, sustainable peace for the country. IOM will seek to enable the active participation of youth in the society by promoting better access to employment and civic engagement opportunities through a series of mutually reinforcing activities which include multi-ethnic career guidance programs, North-South job driven vocational training, conflict resolution and peace building workshops for youth leaders and the facilitation of youth reconciliation forums, and reconciliation through sports and art events.

“ The SCR Unit builds upon IOM's past experience with IDPs, ex-combatants, and other vulnerable groups in working towards sustainable development in alignment with the national peace building and reconciliation process ”

Felipe Cortes Cleves

Head of the Social Cohesion and Reconciliation Unit



IOM first responders at Aranayake landslide site in Kegalle District. © IOM 2016

13 CLIMATE ACTION 	11 SUSTAINABLE CITIES AND COMMUNITIES 	7
MiGOF Objective 1, 2	UNSD Driver 4	

Disaster Risk Reduction and Climate Resilience

Sri Lanka’s traditional weather patterns, characterized by two monsoons and two inter-monsoon periods, have been changing as evident by the greater unpredictability in timing, duration and level of precipitation. Droughts, flood and landslide events occurring in quick succession within a few months of each other and alternating within the same districts, affect the same vulnerable communities and further erode their capacity to cope. The compounded impacts of multiple disasters also limit the capacity of communities to prepare for and reduce risk to future events, including the impacts of climate change.

Sri Lanka faces a multitude of natural hazards including seasonal flooding and drought caused by uneven rainfalls, landslides set off by natural and human causes, violent winds and tropical cyclones. Hazard risks are combined with numerous environmental issues including post-conflict landscapes and other areas suffering from land degradation and deforestation, scarcity of water, resource extraction and coastal erosion. In line with the Sri Lanka Disaster Management Plan 2018-2030 and the National Adaptation Plan for Climate Change Impacts Sri Lanka 2016-2025 (NAP), IOM will continue to work with the national government, local authorities, humanitarian partners and affected communities to better prepare for and build resilience to disasters and climate change.

7.1 DISASTER PREPAREDNESS

IOM’s Disaster Risk Reduction (DRR) framework for Sri Lanka adopts a '3Cs' approach built around Community resilience, Capacity building

and Coordination. IOM strives to provide comprehensive services at the institutional level that influence the capacity of stakeholders to reduce disaster risk. At the community level,

IOM promotes knowledge sharing, structural development and direct beneficiary level assistance. IOM also considers disaster risk when designing and implementing other programming, to ensure that it builds resilience and recognizes local level vulnerabilities. This is especially significant when it is recognized that the impact of disasters can cause both short and long term security, socio-economic and physical shifts which may influence migration-related decisions.

IOM will continue to promote the Migration Crisis Operational Framework as a tool to enhance the government's preparedness and response capacity to migration crises and identify situations and conditions that, if left unmitigated, could lead to further crisis situations. Building on Camp Coordination Camp Management (CCCM) trainings held for government officials in disaster affected areas, IOM will continue to work with partners and communities on key preparedness skills. As the global cluster lead for CCCM, IOM will ensure training methodologies incorporate the elements needed for quick response in the event of a disaster.

In 2017, IOM successfully rolled out for the first time its Displacement Tracking Matrix (DTM) in Sri Lanka as part of its emergency and recovery operations in flood and landslide affected regions and trained government officials and humanitarian partners on its use. The DTM is a system that is used to track and monitor displacement patterns and population mobility. It is designed to systematically capture, process and disseminate information to provide a better understanding of the movements and evolving needs of displaced populations, whether on site or en route, and for government and humanitarian partners to better plan and prepare for the next disaster. IOM will explore avenues for the replication and further application of the DTM in preparation for future natural disasters and in the context of mobility patterns linked to climate change and other environmental factors.

7.2 DISASTER RESPONSE AND RECOVERY

From 2004 to the present, IOM has played a major role, within the humanitarian country team and as part of UN Emergency Response Plans, through responding to recurring natural disasters in Sri

Lanka. With a focus on the shelter and shelter-related non-food item sectors, and in coordination with government authorities and humanitarian partners, IOM will continue to stand ready to provide such support as the GoSL and affected communities require. During the recovery phase, and as part of its approach to Disaster Risk Reduction, IOM also undertakes disaster-sensitive infrastructure interventions such as the construction and renovation of minor irrigation tanks, channel networks, bunds and roads, as well as the construction of paddy storage facilities, agro wells and salt water exclusion bunds with a view to minimize the impact of the damage caused by flooding and drought, and to help build community resilience to such risks. Furthermore, IOM will initiate a dialogue with plantation companies operating in disaster prone areas to gauge their interest in supporting community-based disaster response and recovery projects as part of their corporate social responsibility programs.

7.3 CLIMATE CHANGE ADAPTATION

A month after ratifying the Paris Agreement in September 2016, Sri Lanka published its National Adaptation Plan (NAP) detailing adaptation actions in eight key sectors including agriculture, health, water, irrigation, coastal and marine, biodiversity, tourism, urban development and human settlements. The NAP outlines the need for disaster risk preparedness and management as well as resilient infrastructure to reduce displacement of people through floods, drought and landslides. It also notes the need to increase the resilience of coastal settlements to reduce displacement migration, however, has not been adequately linked to climate change in the NAP which means that the lack of official efforts to track future impacts of climate change on mobility will leave the nexus between the two issues largely unknown, unless it is addressed through dialogue and action.

In the case of Sri Lanka, the possibility of the nation's garment industry in the capital city of Colombo and surrounding areas, as well as foreign employment in the Gulf States is thought to be the main pull factor for internal and external migration patterns in the country. There is, however, a lack of data or analysis on whether climate change is in fact exerting a "push" factor

on these developments, as emerged during the multi-stakeholder national consultation on the Global Compact on Migration that took place in Sri Lanka in August 2017.

Disaster management authorities do not currently include migration data in their analysis. Authorities record numbers of people temporarily displaced by rapid-onset events such as landslides, cyclones or floods, however they do not currently record the extent to which these numbers translate into permanent migration. Nor do they record the impact on migration of slow-onset events such as drought or changes in seasonal rainfall or temperature patterns, which can lead to steady yield decline and eventually drive people to give up agricultural work and move to urban areas with a possible impact on national food security.

Against this backdrop, IOM plans the following actions, in coordination with government and non-government actors: a) Conduct assessments to identify needs and vulnerabilities of communities affected by climate change and environmental migrants – IOM tools such as the displacement tracking matrix can be rolled out in areas vulnerable to natural hazards and climate extremes; b) Conduct in-depth research in areas where data is currently lacking. For example the gender differentiated impacts of climate-induced migration or the role of remittances, including the contribution of remittances to a reduction in forced migration due to climate change by providing a social safety net; c) Identify existing relevant mechanisms at national and sub-national levels to mainstream environmental migration; d) Convene and support regular information sharing meetings to discuss climate migration and feed into the development of relevant policy instruments to it; and e) Develop localized training materials based on IOM's existing Training Manual on Migration, Environment and Climate Change (MECC) with a view to better prepare policymakers on how to integrate MECC into existing policy frameworks and develop climate migration policy instruments.

In line with the National Environment Policy, IOM will integrate green energy approaches into its programming by building on earlier work such as the promotion of solar power for

disaster-affected communities which brought light via solar lamps to hundreds of families enabling adults to work, children to study and women to safely wash after nightfall. This ensures that emergency response projects meet the immediate needs of affected populations, while not causing further damage to already vulnerable areas.

“In our disaster risk reduction and climate resilience initiatives, we will continue to provide effective responses to the mobility dimension of crises, and work in partnership with government and other stakeholders to develop evidence-based policies and programmes through research”

Lesley Jesurajan

Head of the Emergency Response Unit

THE WAY FORWARD

In taking this strategy forward, IOM recognizes and relies on the essential role that Donors can play through the provision of financial and technical support to enable IOM Sri Lanka to effectively and sustainably pursue its strategic objectives with the support of, and in partnership with, the Government of Sri Lanka. The overall aims of the strategy are therefore set at an aspirational, yet realistic, level in line with the current level of assistance extended to IOM by its Donors.

The strategy recognizes that partnerships are fundamental in the effectiveness of long-term sustainable development, and that they provide an important platform for advancing cooperation on migration. In the implementation of this strategy, therefore, IOM Sri Lanka looks forward to working with all of its partners, including the government, Donors, United Nations, non-government organizations, community based organizations, academia, research institutions, and the private sector, at the national, regional, and global levels for better and more effective migration management.

IOM will monitor internally the implementation progress mid-term and evaluate, upon completion, its final achievements, against the annexed results matrix.



Annex I: Strategic Framework

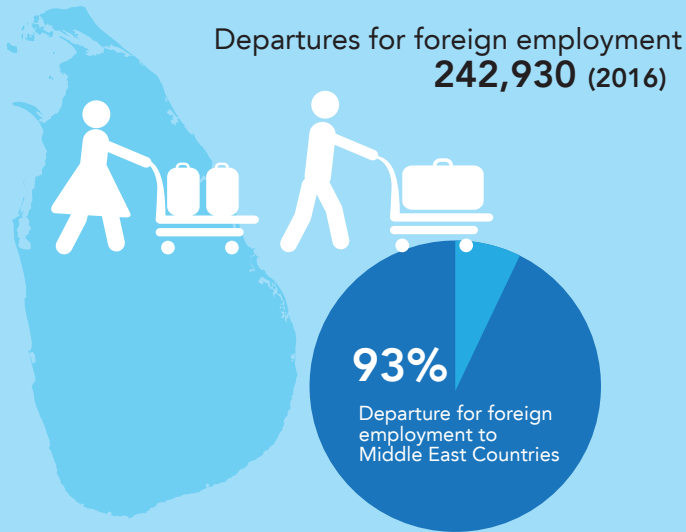
IOM Sri Lanka's Areas of Cooperation operate under IOM's global Migration Governance Framework (MIGOF). The MIGOF principles and objectives guide all programs. The following strategic framework is intended to guide IOM's work towards the achievement of key strategy outcomes. Within this framework, IOM has developed dedicated indicators at the outcome and output levels, supported by realistic targets and baselines, to ensure that an informative and effective performance measurement system is in place to assess progress towards the achievement of IOM Sri Lanka's country strategy. IOM integrates gender across its work. The framework will also serve as an external instrument to communicate clear, detailed information on the impact made by IOM's work to partners and Donors. This practice is not only crucial for IOM external reporting lines, as the Organization's income is almost entirely generated from resources allocated by its Donors, but also for IOM to ensure transparency and accountability to its beneficiaries.

Areas of Cooperation	Key Outcomes	Corresponding Key MIGOF Principles and Objectives
1. Socio-Economic Resilience		
1.1 Migrant return and reintegration assistance.	Returnees overcome challenges impacting their reintegration process.	Objective 1: Advance the socioeconomic well-being of migrants and society.
1.2 Addressing migrant vulnerability.	Populations in high risk areas for irregular migration and human trafficking demonstrate greater awareness of safe, regular and orderly migration pathways.	
1.3 Empowering vulnerable youth.	Improved employment opportunities for vulnerable youth.	
1.4 Refugee repatriation and reintegration assistance.	Enhanced preparedness for return and repatriation. Sustainable reintegration through combined individual and community based support services at the arrival and post-arrival stages.	Objective 2: Effectively address the mobility dimension of crises.
2. Immigration and Border Management		
2.1 Promoting integrated approaches to border management.	The improved legal, procedural and regulatory framework facilitates enhanced coordination and collaboration across relevant agencies in regard to border management.	Objective 3: Ensure that migration takes place in a safe, orderly and dignified manner.
2.2 Enhanced identity management and travel documents issuance systems.	Improved systems facilitate safe and orderly exit and entry of travelers at borders.	
2.3 Combating people smuggling and other trans-border crimes.	Policies, guidelines and regulatory frameworks are responsive to people smuggling and trans-border crimes.	
3 Facilitated Migration Services and Operations		
3.1 Document verifications.	The visa officials of Sri Lanka more effectively mitigate immigration risks.	Objective 3: Ensure that migration takes place in a safe, orderly and dignified manner.
3.2 Cultural orientation and counselling.	Migrants and refugees demonstrate increased preparedness to overcome challenges impacting their reintegration process in countries of destination.	Objective 1: Advance the socioeconomic well-being of migrants and society.

3.3 Refugee resettlement assistance.	Refugees demonstrate greater capacity to overcome challenges impacting their resettlement process.	Objective 2: Effectively address the mobility dimension of crises.
3.4 Humanitarian assistance for stranded migrants.	Emergency repatriation assistance ensures the rights and dignity of stranded migrants.	
4 Labour Migration		
4.1 Promoting ethical recruitment.	Improved policies and programs by government and industry to ensure safe, ethical, and beneficial labour migration.	Objective 1: Advance the socioeconomic well-being of migrants and society.
4.2 Enhanced pre-departure orientation.	Migrants are better informed and have access to relevant services.	
4.4 Support to inbound migration management.	Improved institutional capacity of the government and industry to ensure safe, ethical, and beneficial inbound labour migration.	
4.4 Regional labour migration Initiatives.	Enhanced dialogue and cooperation within the Colombo Process on issues of concern and interest relating to labour mobility.	Principle 3: Engages with partners to address migration and related issues.
5 Migration Health		
5.1. Migrant health assessments.	Countries of destination have reduced risks of public health impact of mobility.	Objective 3: Ensure that migration takes place in a safe, orderly and dignified manner.
5.2. Technical partnership.	Health systems are more migrant-friendly/sensitive.	Objective 1: Advance the socioeconomic well-being of migrants and society.
5.3. Evidence-based policy support.	Increased use of evidence based migration data by the Government.	Principle 2: Formulates policy using evidence and whole-of-Government approach.
6 Social Cohesion and Reconciliation		
6.1 Technical assistance on reparations.	Strengthened government and civil society capacity to design and implement a reparations mechanism.	Objective 2: Effectively address the mobility dimension of crises.
6.2 Strengthening independent commissions.	Increased public trust in the National Police Commission.	Principle 1: Adherence to international standards and fulfilment of migrants' rights.
6.3 Referral and support for marginalized groups.	Increased capacity of marginalized groups to take active part in the national reconciliation process.	Objective 2: Effectively address the mobility dimension of crises.
7 Disaster Risk Reduction and Climate Resilience		
7.1 Disaster preparedness	Improvement in government and community preparedness to manage disasters.	Objective 2: Effectively address the mobility dimension of crises.
7.2. Disaster response and recovery	Affected communities show evidence of recovery following effective speedy assistance.	
7.3. Climate change adaptation	The government improves its policy response to the nexus of migration, environmental degradation and climate change in an integrated manner.	Objective 1: Advance the socioeconomic well-being of migrants and society

Annex II: Migration Infographics

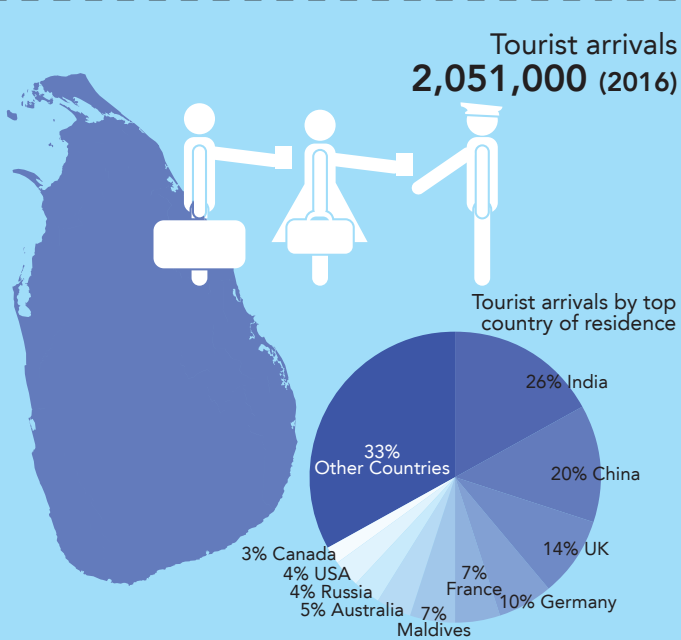
Departures for foreign employment
242,930 (2016)



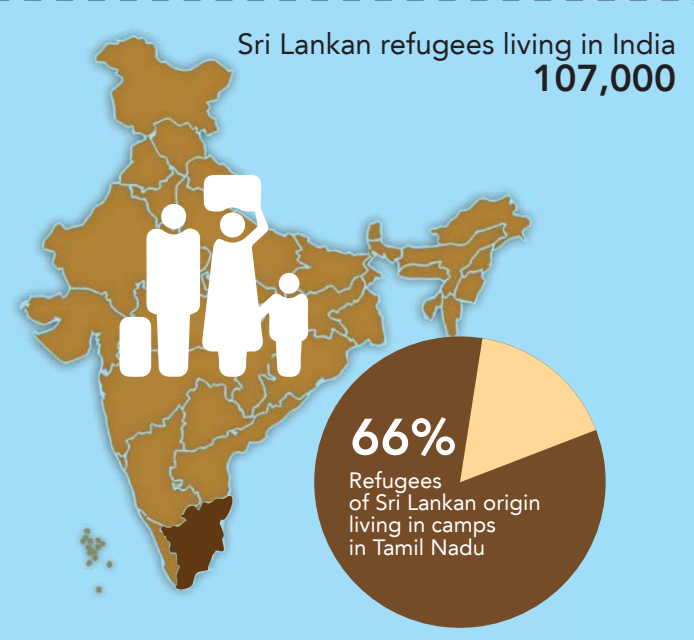
Estimated arrivals for foreign employment
40,000 (2017)



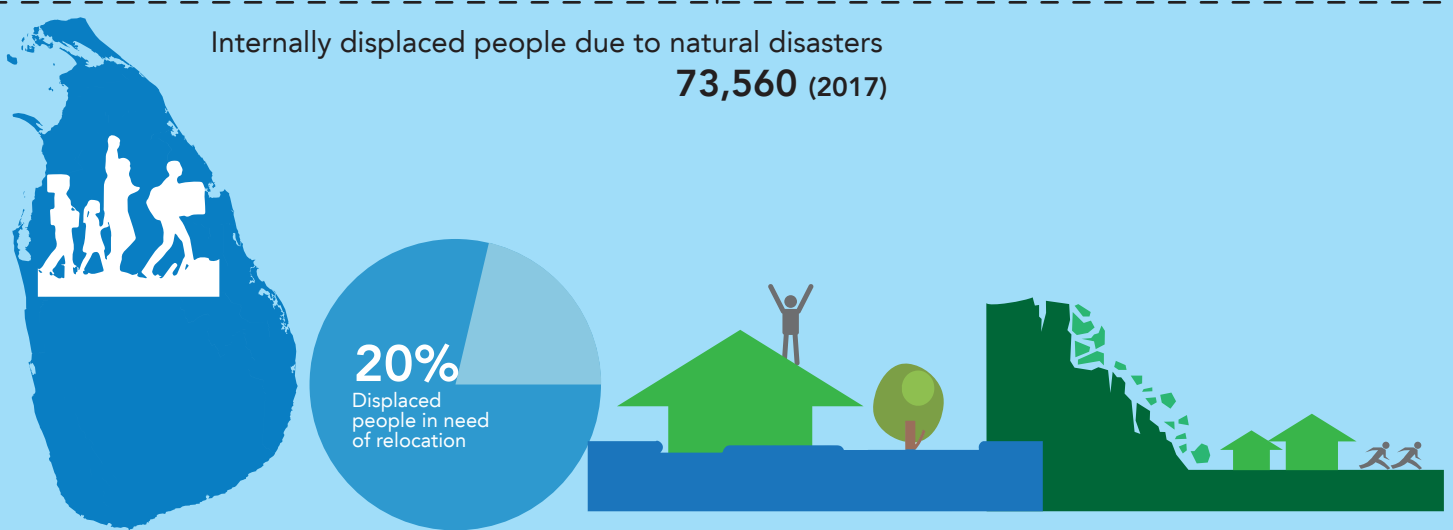
Tourist arrivals
2,051,000 (2016)



Sri Lankan refugees living in India
107,000



Internally displaced people due to natural disasters
73,560 (2017)



Sources

- Floods and Landslides Emergency Response Plan (June – October 2017) https://reliefweb.int/sites/reliefweb.int/files/resources/SriLanka_ResponsePlan_020617.pdf
- NBRO Report 2017
- Ministry of Prison Reforms, Rehabilitation, Resettlement and Hindu Religious Affairs, http://resettlementmin.gov.lk/site/index.php?option=com_content&view=article&id=4&Itemid=19&lang=en
- Statistics Tourism Growth Trends 1970-2016, Sri Lanka Tourism Development Authority <http://www.sltta.gov.lk/sites/default/files/tourism-growth-and-trends-1970-2016.pdf> <http://www.sltta.lk/>
- Different Perspectives of Departure Details, Sri Lanka Bureau of Foreign Employment Page 1
- Sri Lanka Bureau of Foreign Employment, Annual Statistical Report of Foreign Employment – 2015, Different Perspectives of Departure Details <http://www.slbfe.lk/file.php?FID=254>

Annex III: IOM Office Locations

Head Office

No. 62, Ananda Coomaraswamy Mawatha, Colombo 03

Tel: +94 11 5325300 Fax: +94 11 5325302

Email: iomcolombo@iom.int

Operations and Migrant Services Centre

No. 53C, Ananda Coomaraswamy Mawatha, Colombo 03

Tel: +94 11 5933333

Migration Health Assessment Centre

42/1 Horton Place, Colombo 07

Call Centre: +94 11 2031700

Jaffna

139, Temple Road, Jaffna

Tel: +94 21 2228620, Fax: +94 21 2229681

Kilinochchi

155, Mile Post, Jaffna Road, Kilinochchi

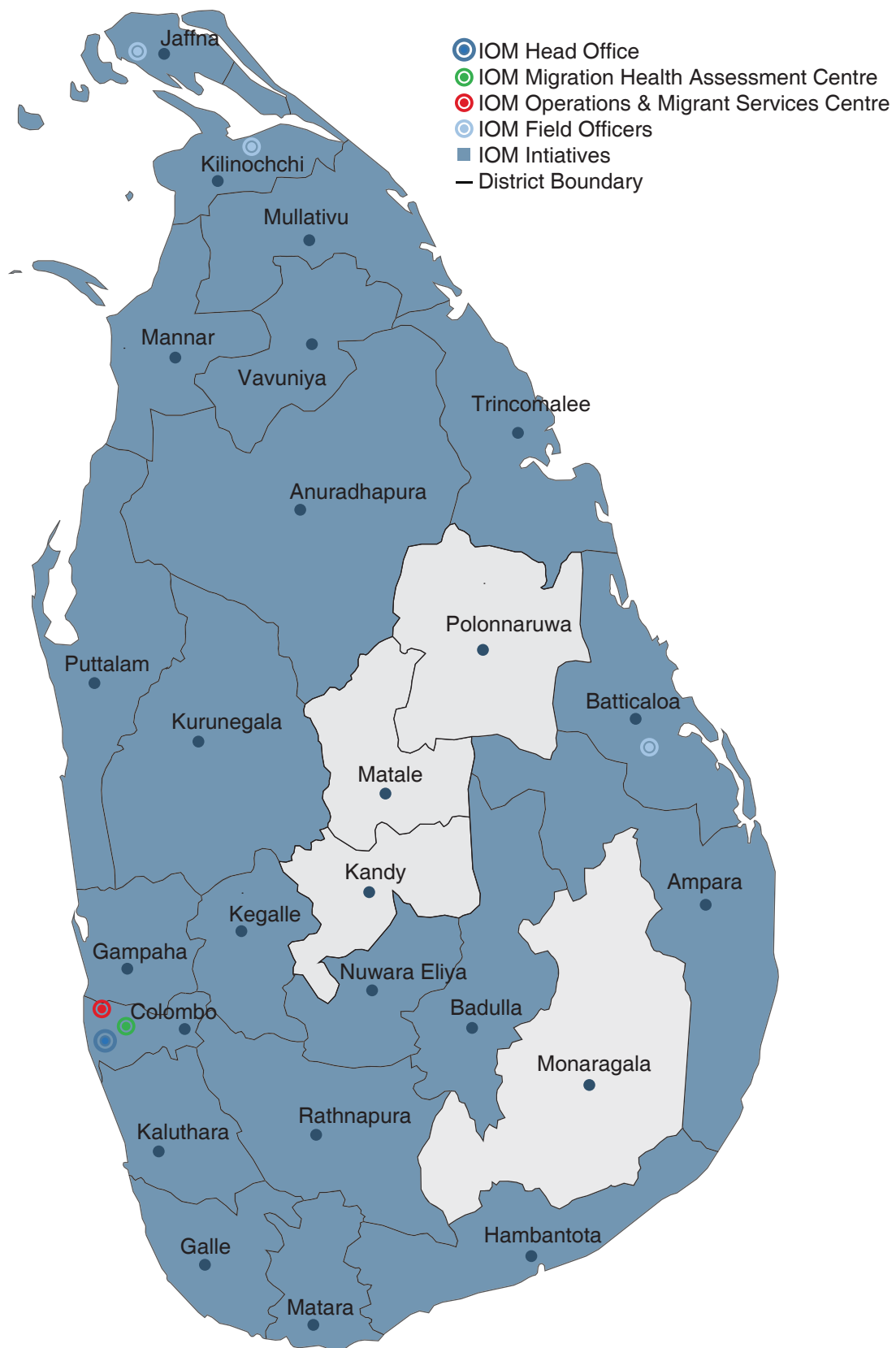
Tel: +94 21 2285386 Fax: +94 21 2285386

Batticaloa

3, St. Anthony's Street, Batticaloa

Tel: +94 65 5673400, Fax: +94 65 2227043

Annex IV: IOM's Geographical Scope



IOM is committed to the principle that humane and orderly migration benefits migrants and society. As an intergovernmental organization, IOM acts with its partners in the international community to: assist in meeting the operational challenges to migration; advance understanding of migration issues; encourage social and economic development through migration; and uphold the human dignity and well-being of migrants.





International Organization for Migration (IOM)
The UN Migration Agency

Head Office

62, Ananda Coomaraswamy Mawatha, Colombo 03

Tel: +94115325300 | Fax: +94115325302

E-mail: iomcolombo@iom.int | Website: <http://srilanka.iom.int>